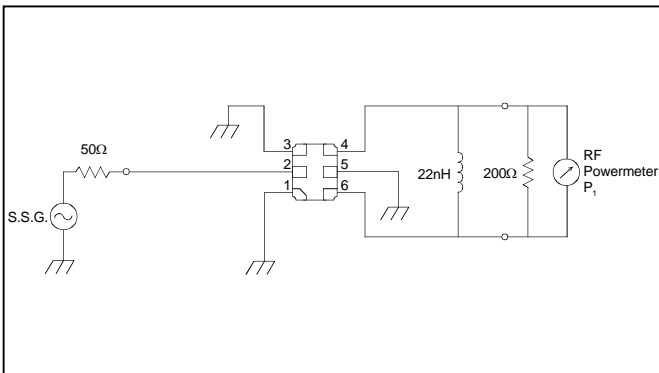


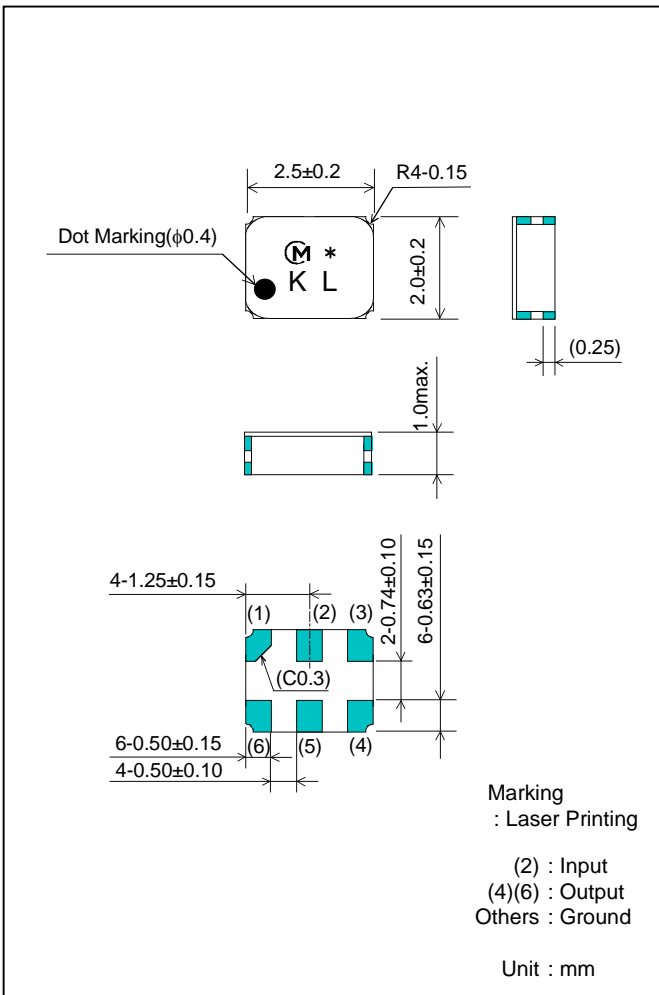
■ Feature

1. Balance type (50 ohm//200 ohm)
2. Low Insertion Loss (3.0 dB max.)
3. High Attenuation
 (at Duplex Frequency Range ; 8 dB min.)

■ Test Circuit



■ Package Dimensions



■ Specification (-25 ... +75 deg.C)

Item	Specification
Nominal Center Frequency (fc)	1960 MHz
Insertion Loss (1930...1990MHz)	3.0 dB max.
Absolute Attenuation	
1) 100 ... 1830 MHz	23 dB min.
2) 1830 ... 1910 MHz	8 dB min.
3) 1830 ... 1910 MHz (25+/-2deg.C)	10 dB min.
4) 2010 ... 2070 MHz	8 dB min.
5) 2010 ... 2070 MHz (25+/-2deg.C)	10 dB min.
6) 2070 ... 3000 MHz	20 dB min.
7) 3000 ... 6000 MHz	35 dB min.
Ripple Deviation (1930...1990MHz)	2.4 dB max.
VSWR (1930...1990MHz)	2.4 max.
Amplitude Balance (1930...1990MHz)	+/-2.2 dB max.
Phase Balance (1930...1990MHz)	180+/-20deg.max.
Input Impedance (nominal)	50 ohm
Output Impedance (nominal)	200 ohm//22nH

■ Frequency Characteristics

