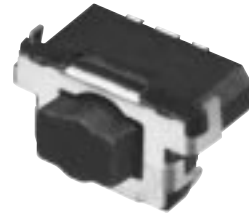


**NEW**

## Double-action Side-Push Type Light Touch Switches

Japan

Type: **EVQQ0**

Long-life double-action side-push switch with low profile saving space due to the edge mounting feature

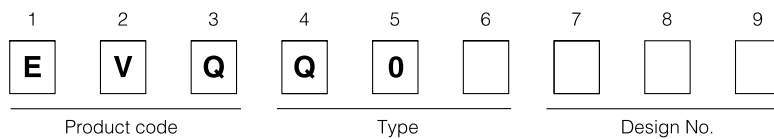
### ■ Features

- Industry's first two-stage lateral pushing type has been realized
- Small, low-profile and space saving  
Projection area: 23.25 mm<sup>2</sup>, Printed circuit board being as low as 1.35 mm
- Long life: Operation Life 500000 cycle min.

### ■ Recommended Applications

- Menu-scroll and enter functions for Cellular Phone, etc.
- Shutter switches for Still Cameras, Video Cameras

### ■ Explanation of Part Numbers



### ■ Major Specifications

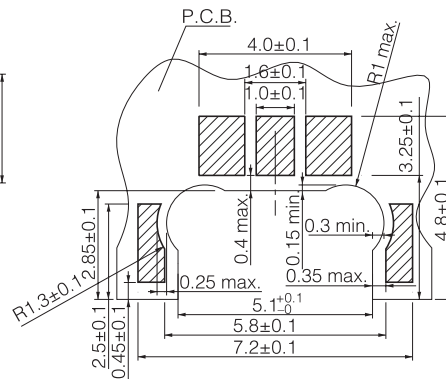
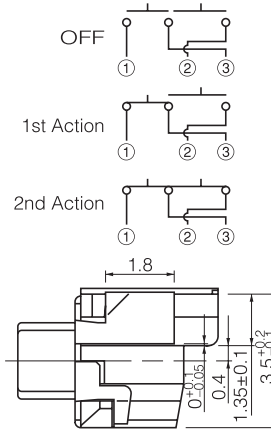
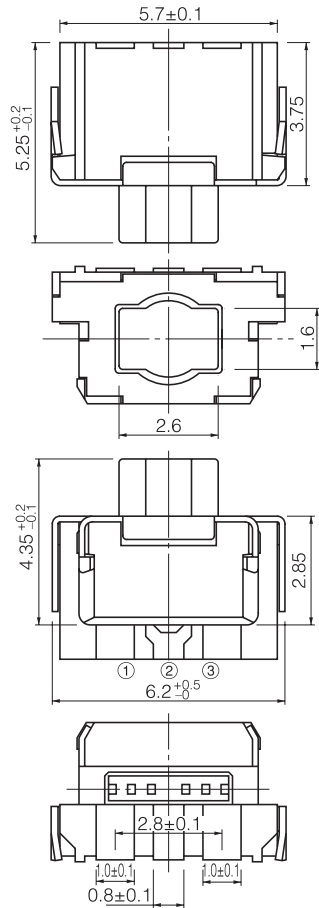
Type		Snap action/Push-on type SPDT
Electrical	Circuit Diagram	
	Rating	20 mA 15 Vdc
	Contact Resistance	100 mΩ max.
	Insulation Resistance	100 MΩ min. (at 100 Vdc)
	Dielectric Withstanding Voltage	100 Vac for 1 minute
	Bouncing	ON:5 ms max., OFF:20 ms max.
Mechanical	Operating Force (1 st Action)	1.0 N
	Operating Force (2 nd Action)	2.6 N
	Travel (1 st Action)	0.4 mm
	Travel (2 nd Action)	0.6 mm
	Push Strength	20 N for 1 minute
Endurance	Operating Life	1 st Action without click : 500000 cycles min. 1 st Action with click : 30000 cycles min.
	Operating Temperature	-20 °C to +70 °C
	Storage Temperature	-40 °C to +85 °C
Minimum Quantity/Packing Unit		2500 pcs. (Reel Pack)
Quantity/Carton		12500 pcs.

Design and specifications are each subject to change without notice. Ask factory for the current technical specifications before purchase and/or use. Should a safety concern arise regarding this product, please be sure to contact us immediately.

■ Dimensions in mm (not to scale)

EVQQ0A03K

(Embossed Taping)



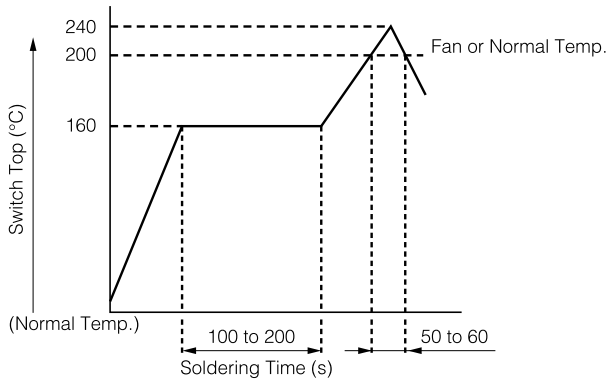
Recommended land pattern

Note : Please pwt your consideration not to let any burrs of printed wiring board stick out from the mounting surface of our switches.

Part Numbers	Operating Force	Height	Operating Life
EVQQ0A03K	1 st Action/1.0 N (Without click) 2 nd Action/2.6 N	1.35 mm	500000 cycles

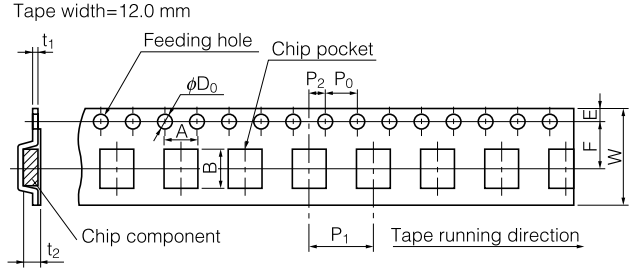
**NEW**

■ Recommended Reflow Soldering Conditions



Recommended Reflow Temperature Profile

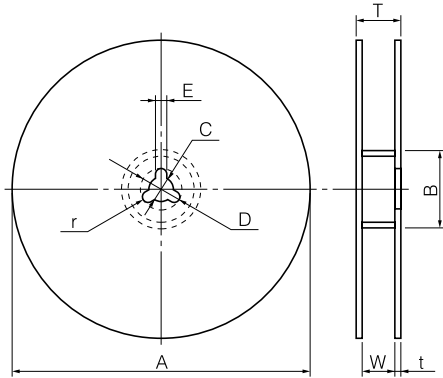
● Embossed Carrier Taping



Unit: mm

Part No.	Height	A	B	W	F	E	P <sub>1</sub>	P <sub>2</sub>	P <sub>0</sub>	D <sub>0</sub> Dia.	t <sub>1</sub>	t <sub>2</sub>
EVQQ0	3.5	6.6±0.2	5.7±0.2	12.0±0.3	5.5±0.1	1.75±0.1	8.0±0.1	2.0±0.1	4.0±0.1	1.5 <sup>+0.3</sup> <sub>0</sub>	0.4±0.1	3.8±0.2

● Standard Reel Dimensions in mm (not to scale)



Item	A	B	C	D	E
Rate (mm)	φ380.0±2.0	φ80.0±1.0	φ13.0±0.5	φ21.0±1.0	2.0±0.5

Item	W	T	t	r
Rate (mm)	13.5±1.0	17.5±1.0	1.0 to 3.0	1.0±0.5